

**LONDON  
VICTORIA  
GROUPS**

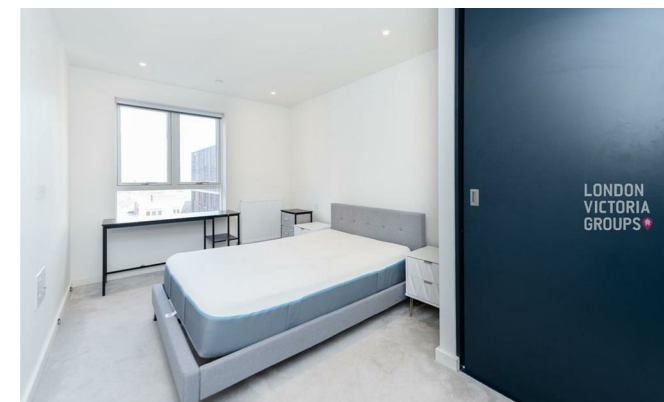


## Alington House, 1 Mary Neuner Road

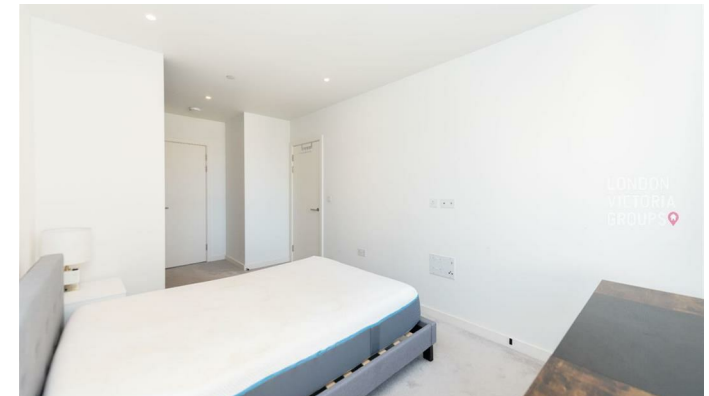
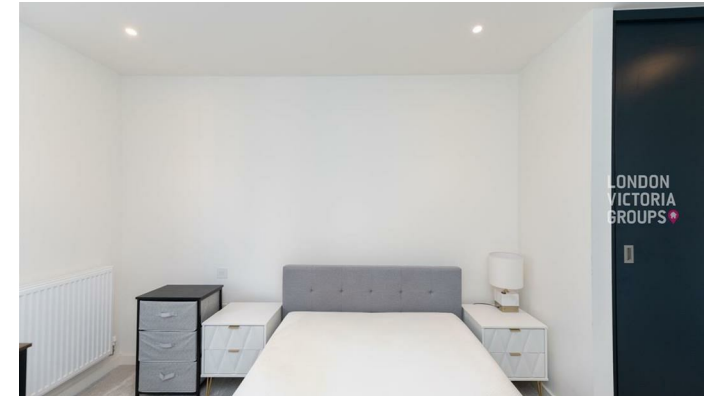
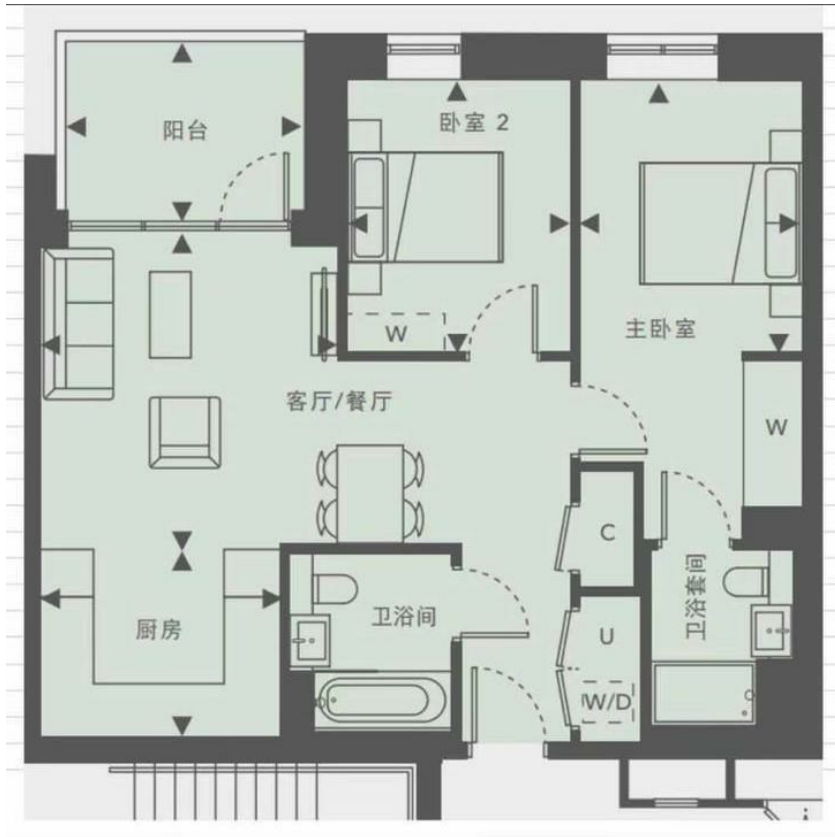
, London N8 0ER

- Two-bedroom two-bathroom apartment
- Modern fully integrated kitchen
- Residents' lounge and landscaped communal areas
- Secure lift access and entry
- EPC-B
- Right open-plan living and dining area
- 24-hour concierge service
- Fully equipped gym
- Hornsey Station and Finsbury Park Station
- CTB-D

**£2,500 Per Month**



Local Authority **Haringey**  
Council Tax Band **D**  
EPC Rating **B**



**London Office Office**  
Spaces Victoria, 25 Wilton Road, Pimlico,  
London, SW1V 1LW

**Contact**  
020 3084 3094  
XL@londonvictoriagroups.co.uk  
www.londonvictoriagroups.co.uk

Agents Note: Whilst every care has been taken to prepare these particulars, they are for guidance purposes only. All measurements are approximate and for general guidance purposes only and whilst every care has been taken to ensure accuracy, they should not be relied upon and potential buyers/tenants are advised to recheck the measurements.